

IELTSFEVER ACADEMIC MODULE PRACTICE TEST 18

LISTENING**SECTION 1** *Questions 1–10**Questions 1–6*

Complete the form below.

Write **NO MORE THAN TWO WORDS AND/OR A NUMBER** for each answer.

APPLICATION FORM	
<i>Example</i>	<i>Answer</i>
Years of Membership:	<u>Seven</u>
Type of I.D.:	1
I.D. No.:	2
Family Name:	Black
Other Names:	Gavin Raymond
D.O.B.:	22/01/1973
I.D. Expiry Date:	3
Address:	4 Meadowbank
Class of Vehicle:	5
Endorsements:	None
Convictions:	6 (1993)

Questions 7–10

Complete the table below.

Write **NO MORE THAN TWO WORDS AND/OR A NUMBER** for each answer.

Membership Level Benefits				
	7	Bronze	Silver	Gold
Standard Care	—	5% discount	7.5 % discount	50% discount off 8
Insurance	—	\$10 off fee	\$20 off fee	Free 9
Personal Loans	0.25% reduction*	0.5% reduction*	10 reduction*	1.25% reduction*

*on applicable rate

SECTION 2 Questions 11–20

Questions 11–16

Complete the sentences below.

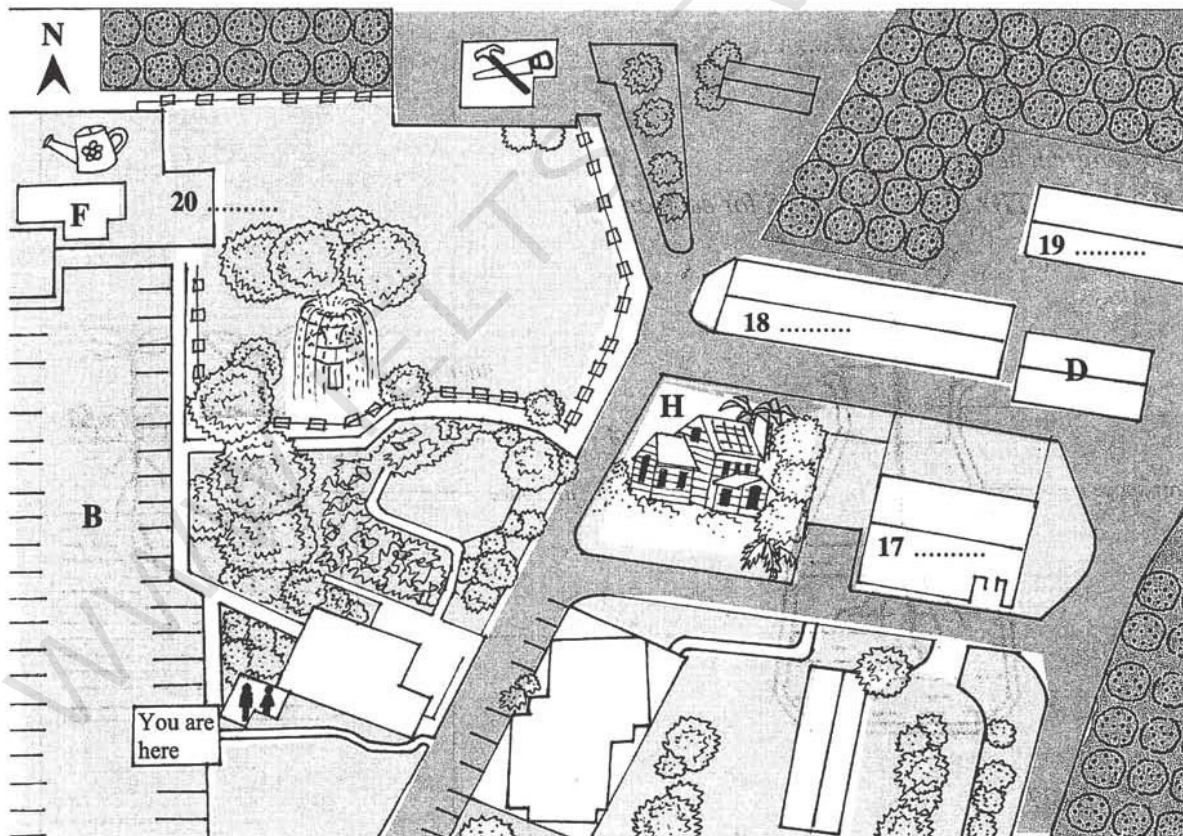
Write **NO MORE THAN THREE WORDS** for each answer.

- 11 Diners can eat inside the restaurant or in the
- 12 Visitors can put on their swim suits and play in the
- 13 The Cottage houses a museum, cinema room and
- 14 The Garden Nursery is the place to buy plants, pots, garden sculptures and ornaments including
- 15 The Wood Crafting Shed is a great place to buy wooden products, especially for the children.
- 16 The avocado fruit that is grown at Summerland is picked by

Questions 17–20

Label the plan below.

Choose your answers from the box below and write the letters **A–H** next to questions 17–20.



- A Avocado Packing Shed
- B Car Park
- C Carton Manufacturing Shed
- D Cool Room
- E Gift Shop
- F Garden Shop
- G Macadamia De-husking Shed
- H Museum

SECTION 3 *Questions 21–30*

Questions 21 and 22

Complete the sentences below.

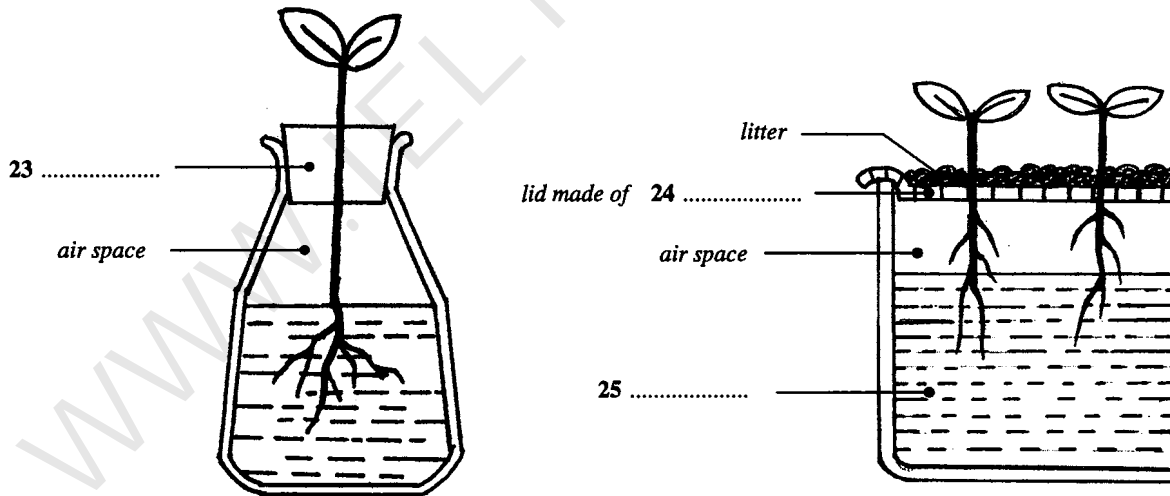
Write **ONE WORD ONLY** for each answer.

- 21 In hydroculture, plants are grown with their roots in water so is necessary for the upper part of the plant.
- 22 LECA is made from

Questions 23–25

Label the diagram below.

Write **NO MORE THAN TWO WORDS** for each answer.



Questions 26–27

Which **TWO** kinds of produce are especially suited to the nutrient film technique?

- A peas
- B beans
- C potatoes
- D yams
- E tomatoes

Questions 28–29

Which **TWO** materials can be used as a substratum?

- A oxygen-rich solution
- B coconut fibre
- C mineral wool
- D rock
- E paper fibre

Question 30

Write **NO MORE THAN TWO WORDS** for the answer.

30 What do growers risk when moving from an old system to a new one?

.....

SECTION 4 Questions 31–40**Questions 31–36**

Complete the sentences below.

Write **NO MORE THAN ONE WORD OR A NUMBER** for each answer.

- 31 Frederick was the name of the duke made famous in a well-known
- 32 Frederick was aged when he was sent to war.
- 33 His battles against the ended in total disaster.
- 34 In 1798, George III gave his son a within the ranks of the military.
- 35 Frederick should not be held wholly accountable for failing: the of his fighters made victory difficult to achieve.
- 36 The people Frederick commanded were mostly old men, new conscripts or

Questions 37–40

Complete the notes below.

Write **NO MORE THAN TWO WORDS** for each answer.

The Grand Old Duke of York:

- wanted to enlist better types of **37**
- made the army better by bringing in chaplains, medics and **38**
- established a college for preparing army **39**
- established school in Chelsea for sons of soldiers
- gave up the position of Commander-in-Chief in 1807 because of a **40**
- re-appointed later (in 1811) by his brother (George IV)
- died in 1827